

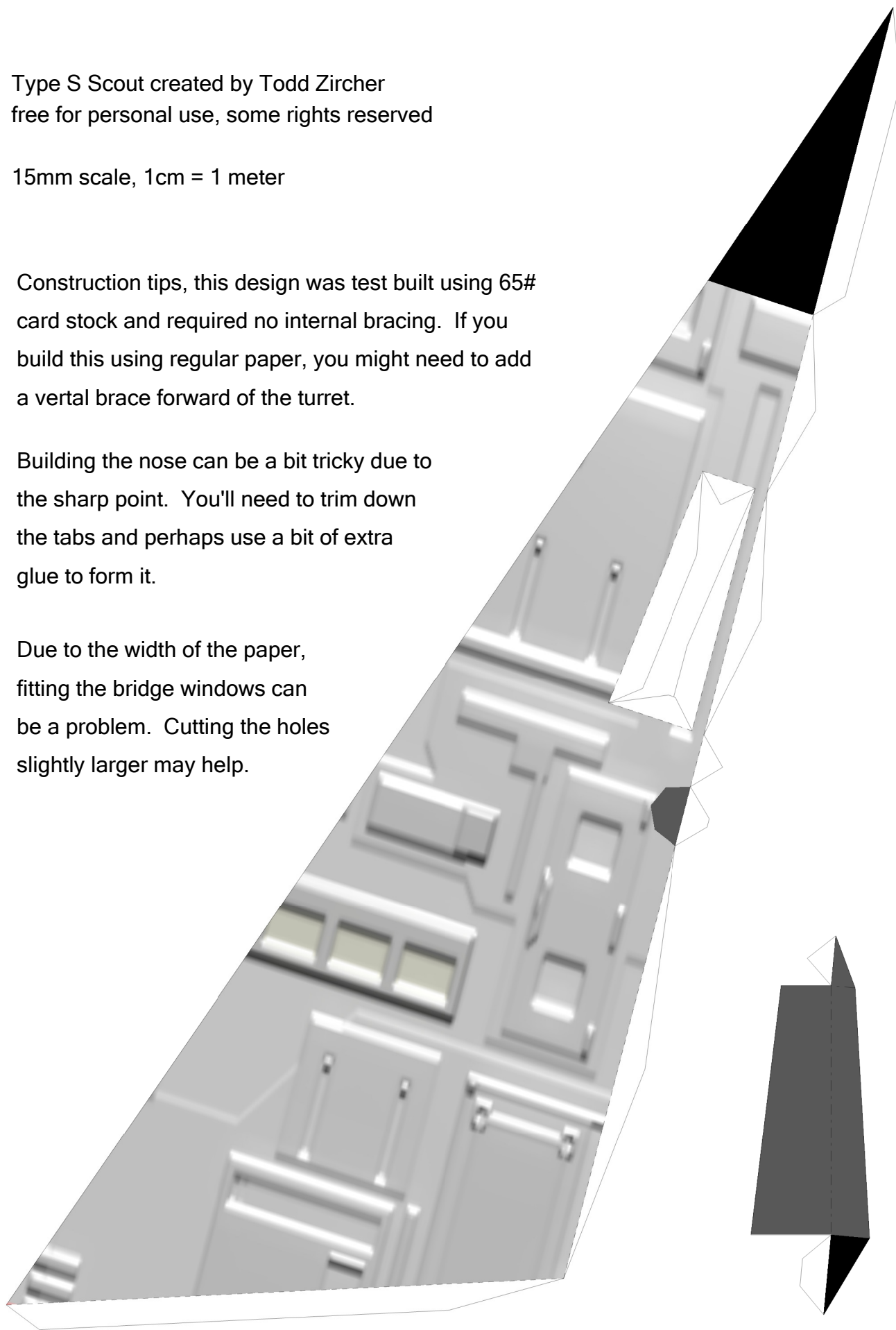
Type S Scout created by Todd Zircher  
free for personal use, some rights reserved

15mm scale, 1cm = 1 meter

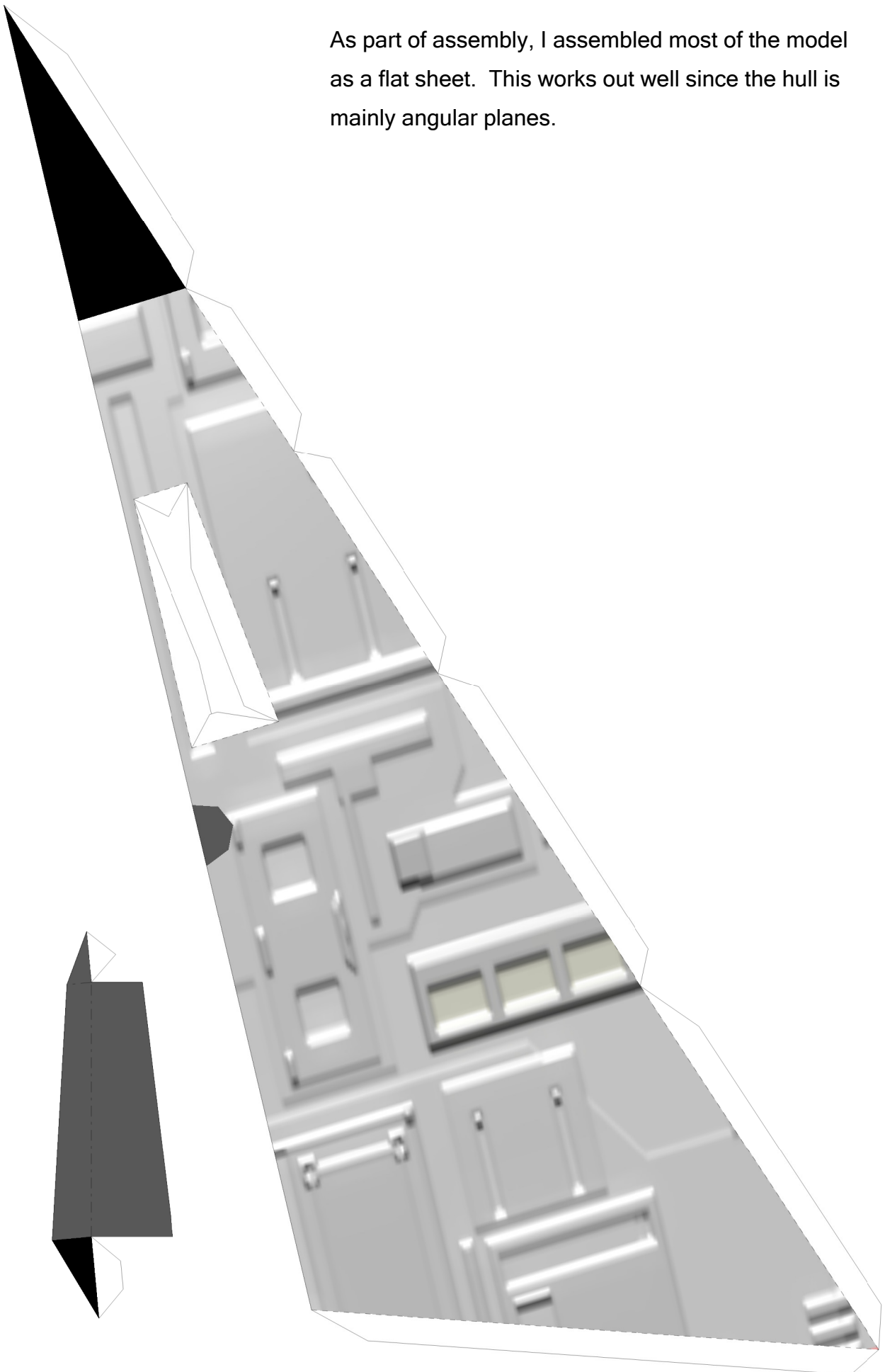
Construction tips, this design was test built using 65# card stock and required no internal bracing. If you build this using regular paper, you might need to add a vertical brace forward of the turret.

Building the nose can be a bit tricky due to the sharp point. You'll need to trim down the tabs and perhaps use a bit of extra glue to form it.

Due to the width of the paper, fitting the bridge windows can be a problem. Cutting the holes slightly larger may help.



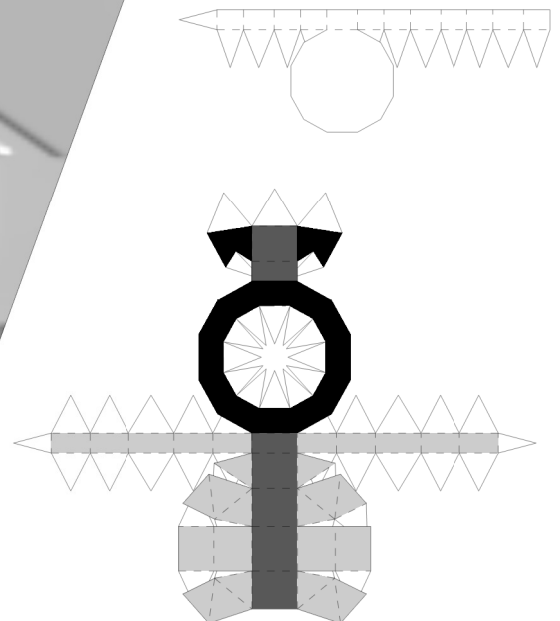
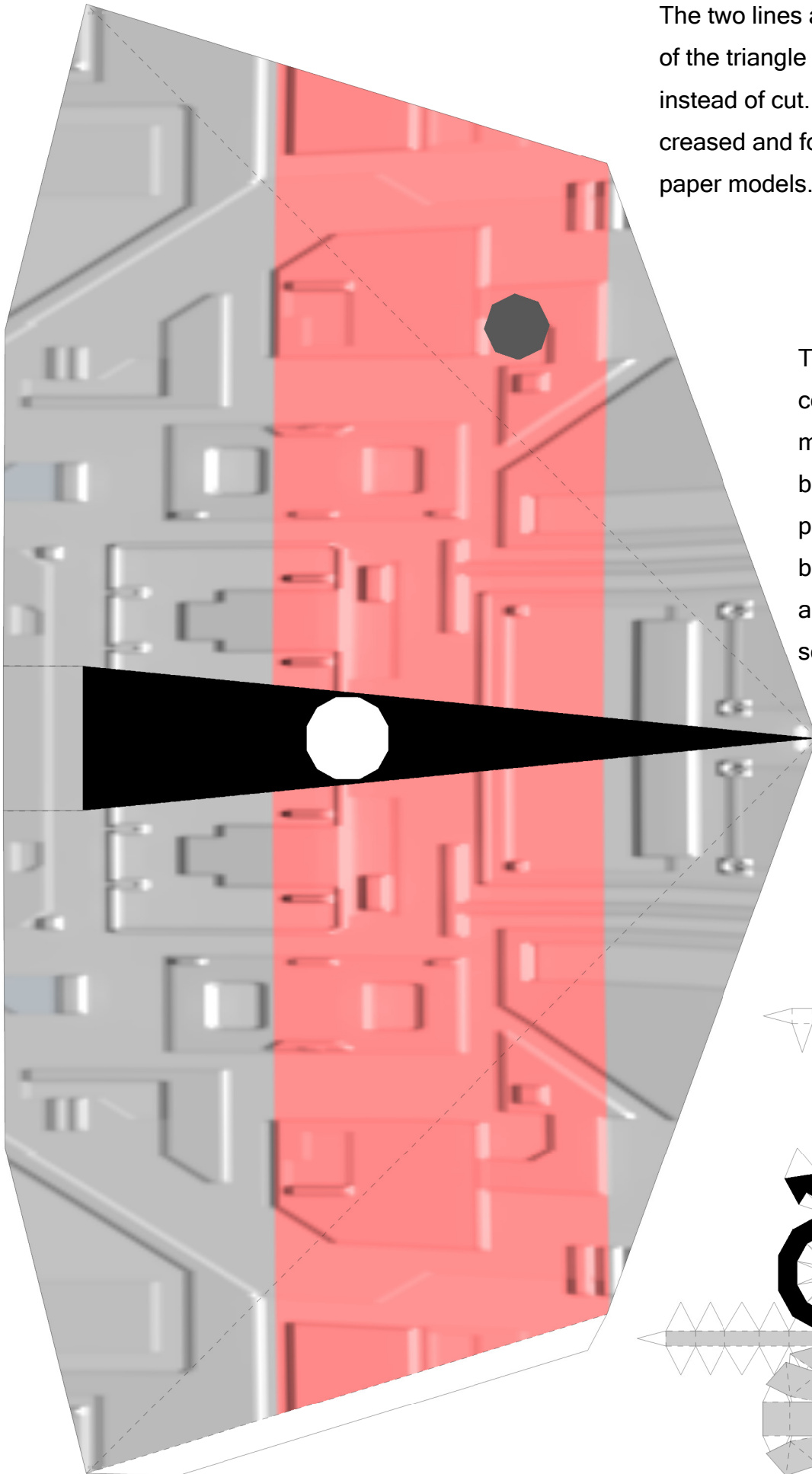
As part of assembly, I assembled most of the model as a flat sheet. This works out well since the hull is mainly angular planes.

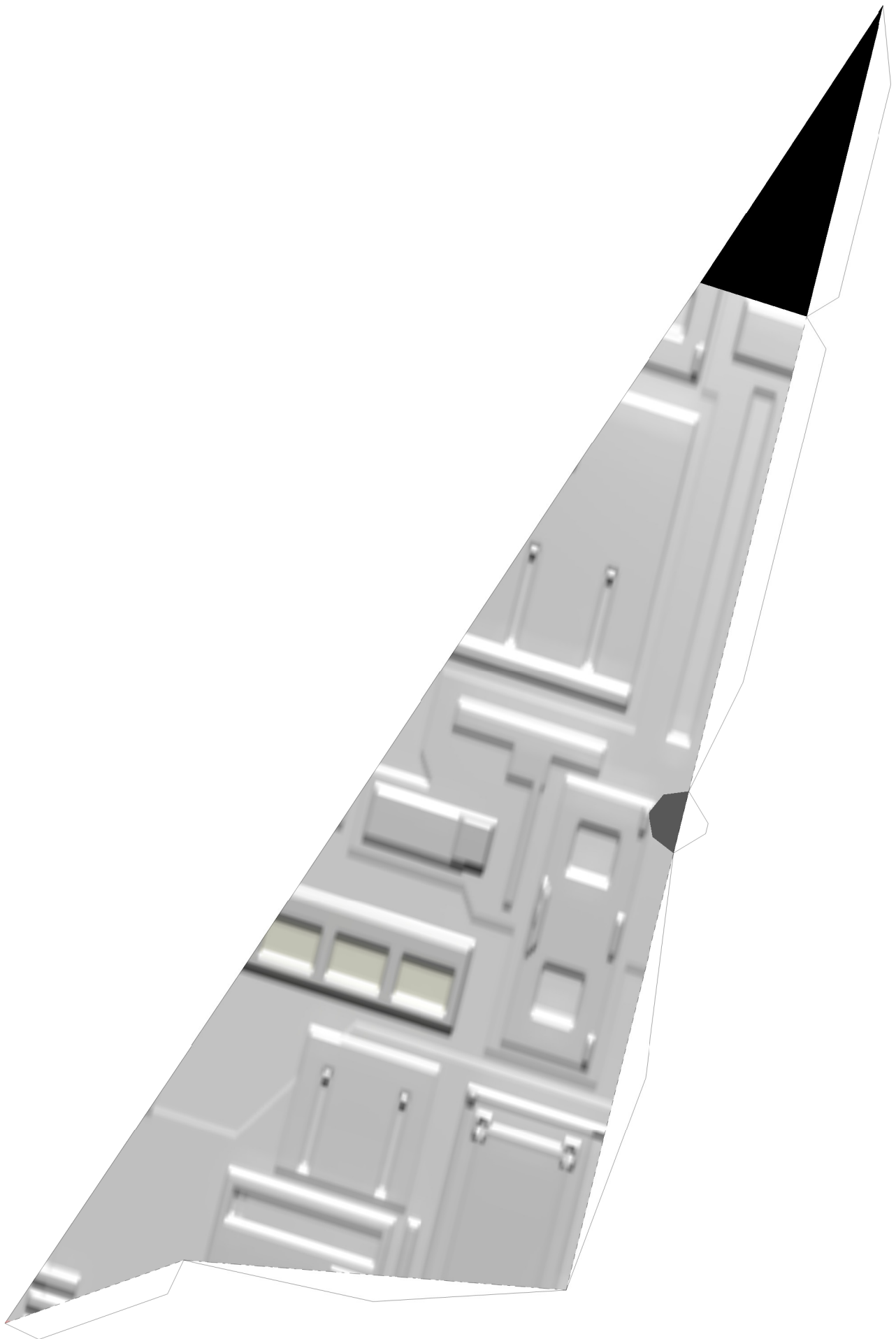


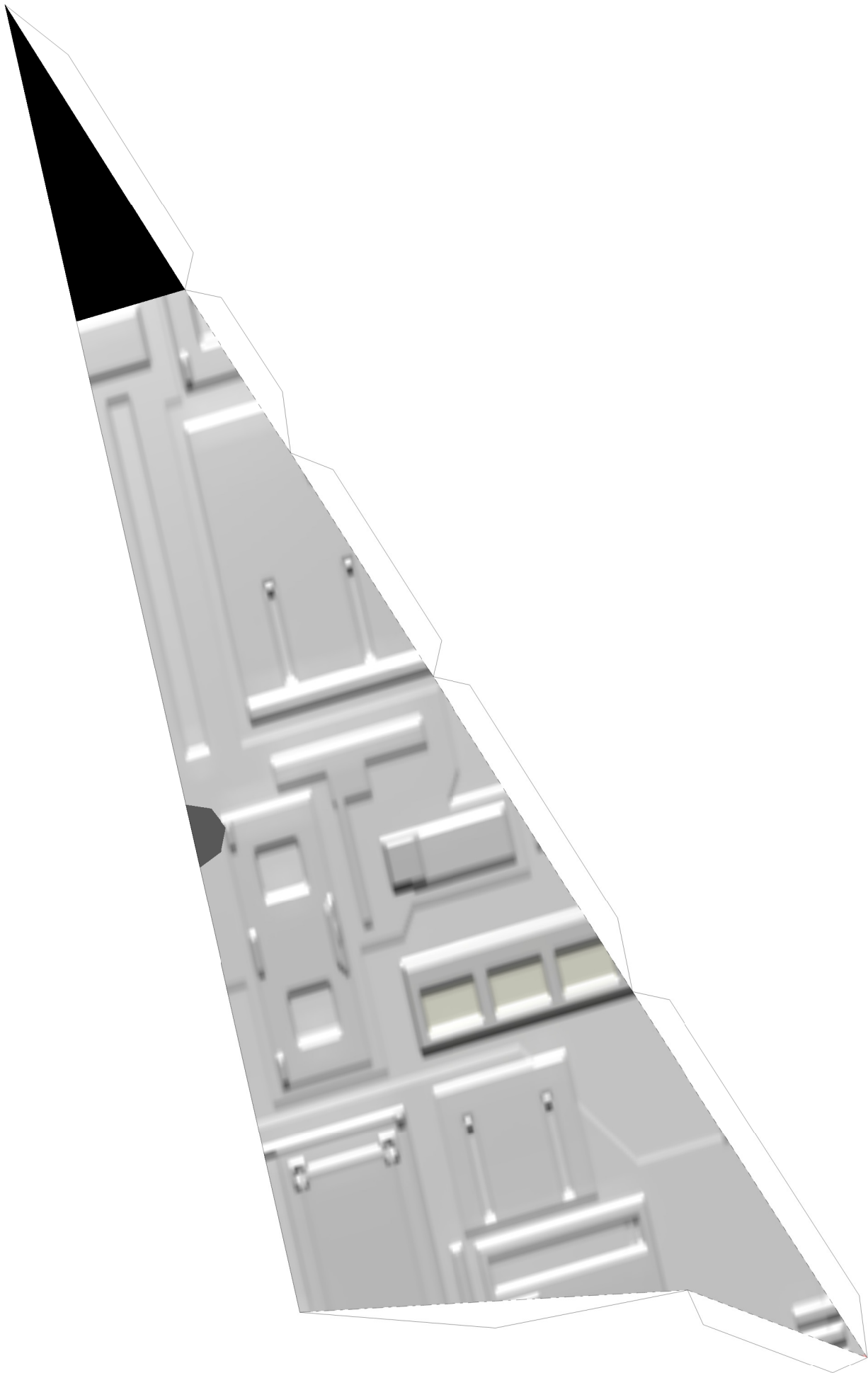
The white circle is cut out and is the hole for the turret. Normally you cut on solid black lines, but

The two lines at the narrow base of the triangle can be creased instead of cut. Dotted lines are creased and folded as normal for paper models.

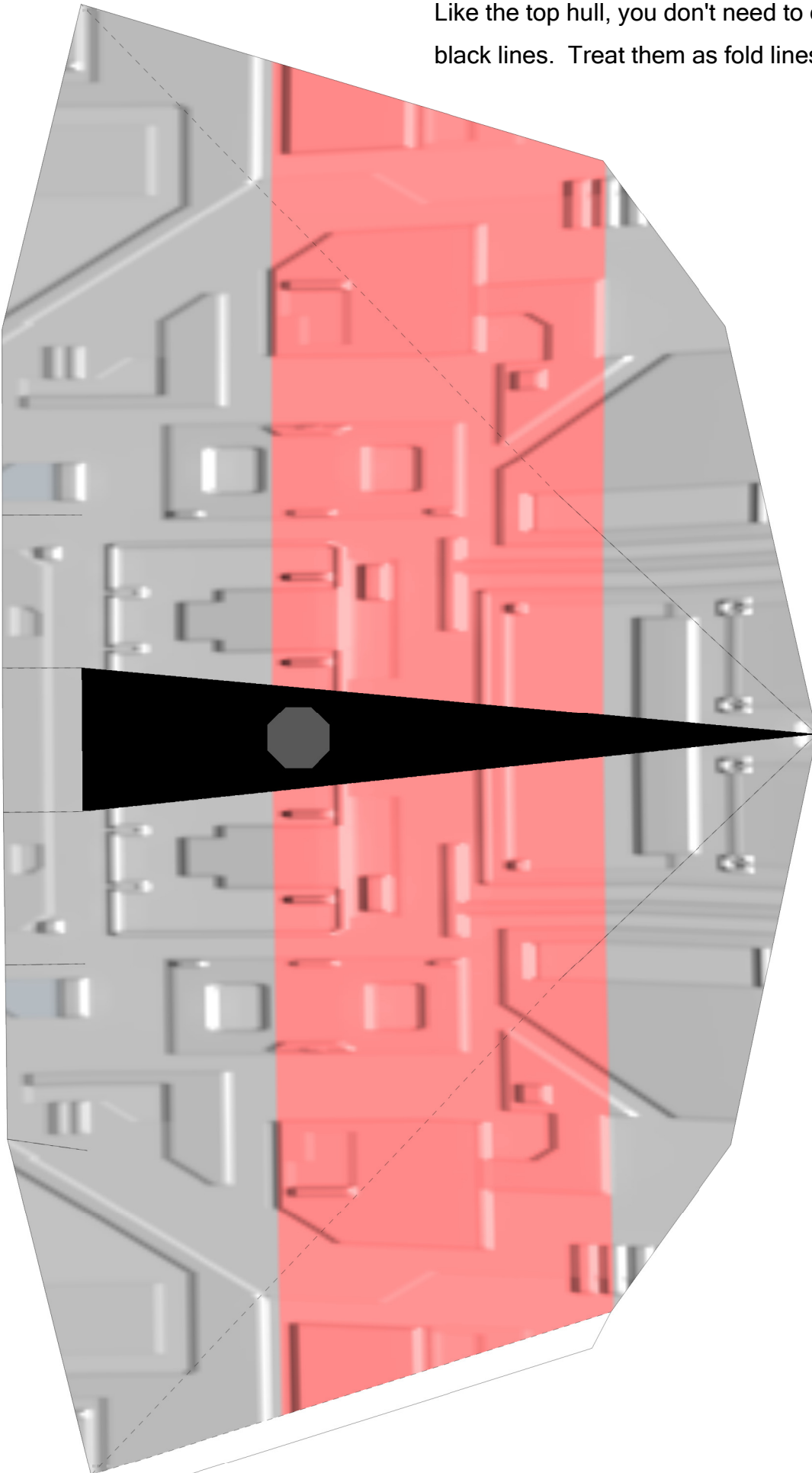
The turret is the most complicated part of the model. There are no barrels since they are pretty small. Either kit bash some or chop up a coffee stirrer to make some.

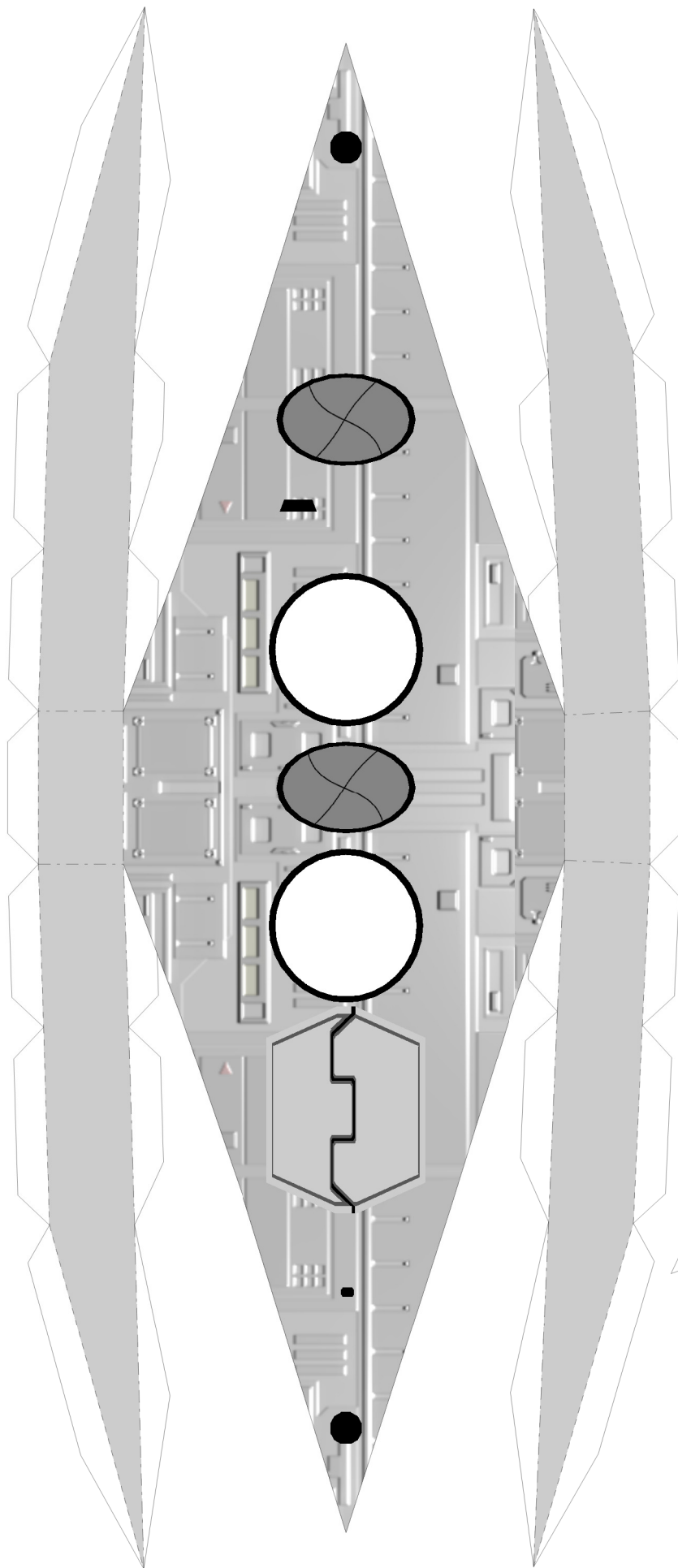






Like the top hull, you don't need to cut on the solid black lines. Treat them as fold lines.





I did something cheaty here that Pepakura does not know how to handle. The inside edge of the aft ledges is designed to be glued directly to the main hull and the outer set of tabs is not needed. You can cut them off to get a sharper edge. Similarly, the inside and outside walls of the nozzles are also intended to be glued back-to-back. There are no tabs connecting the black circles. You can attach them to shape the nozzles

